

# 勝田パークボウル 2025.5.6月



**Oil Pattern Distance:** 42 Feet      **Reverse Brush Drop:** 42 Feet      **Oil Per Board:** 50 uL  
**Forward Oil Total:** 11.3 mL      **Reverse Oil Total:** 9.7 mL      **Volume Oil Total:** 21 mL  
**Forward Boards Crossed:** 226 Boards      **Reverse Boards Crossed:** 194 Boards      **Total Boards Crossed:** 420 Boards

|   | Start | Stop | Loads | Speed | Crossed | Start | End  | Feet | T.Oil |
|---|-------|------|-------|-------|---------|-------|------|------|-------|
| 1 | 5L    | 5R   | 1     | 14    | 31      | 0.0   | 0.0  | 0.0  | 1550  |
| 2 | 6L    | 6R   | 1     | 14    | 29      | 0.0   | 1.9  | 1.9  | 1450  |
| 3 | 7L    | 7R   | 1     | 14    | 27      | 1.9   | 3.8  | 1.9  | 1350  |
| 4 | 8L    | 8R   | 1     | 14    | 25      | 3.8   | 5.7  | 1.9  | 1250  |
| 5 | 10L   | 10R  | 3     | 14    | 63      | 5.7   | 11.6 | 5.9  | 3150  |
| 6 | 12L   | 12R  | 3     | 18    | 51      | 11.6  | 19.2 | 7.6  | 2550  |
| 7 | 2L    | 2R   | 0     | 30    | 0       | 19.2  | 42.0 | 22.8 | 0     |

◀ ▶ ⏪ ⏩ Forward Reverse More

|   | Start | Stop | Loads | Speed | Crossed | Start | End  | Feet  | T.Oil |
|---|-------|------|-------|-------|---------|-------|------|-------|-------|
| 1 | 2L    | 2R   | 0     | 30    | 0       | 42.0  | 35.0 | -7.0  | 0     |
| 2 | 13L   | 13R  | 2     | 26    | 30      | 35.0  | 27.7 | -7.3  | 1500  |
| 3 | 12L   | 12R  | 3     | 26    | 51      | 27.7  | 16.7 | -11.0 | 2550  |
| 4 | 11L   | 11R  | 2     | 22    | 38      | 16.7  | 10.5 | -6.2  | 1900  |
| 5 | 10L   | 10R  | 1     | 22    | 21      | 10.5  | 7.4  | -3.1  | 1050  |
| 6 | 9L    | 9R   | 1     | 18    | 23      | 7.4   | 4.9  | -2.5  | 1150  |
| 7 | 5L    | 5R   | 1     | 18    | 31      | 4.9   | 2.4  | -2.5  | 1550  |
| 8 | 2L    | 2R   | 0     | 14    | 0       | 2.4   | 0.0  | -2.4  | 0     |

◀ ▶ ⏪ ⏩ Forward Reverse More

Conditioner:  
Type In or Select One

TransferType:  
Type In or Select One

Forward



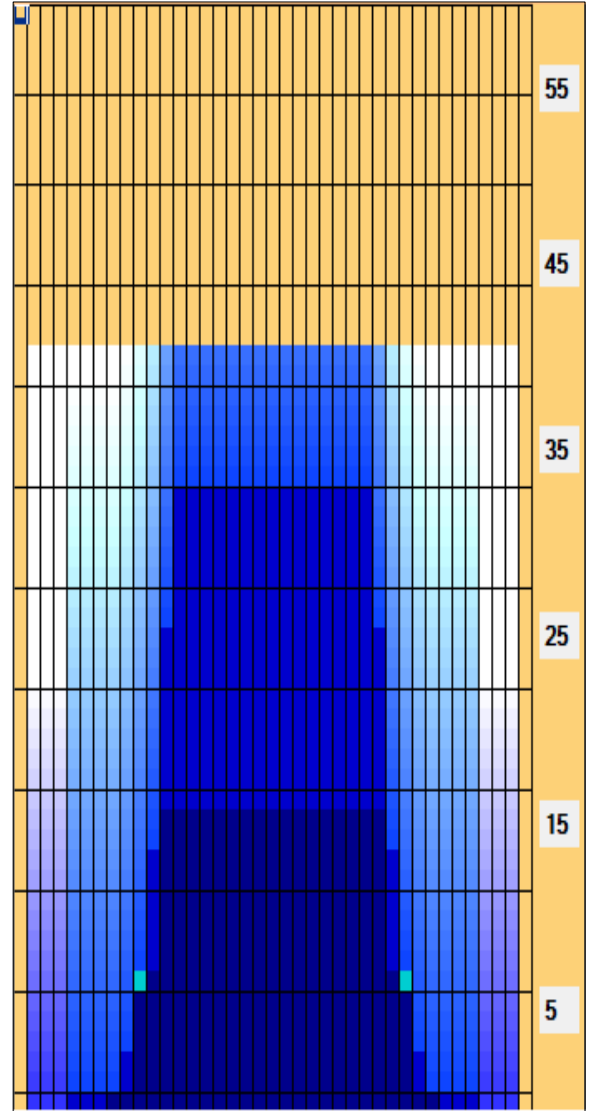
Reverse



Combined



Buff



| Item             | 3L-7L:18L-18R        | 8L-12L:18L-18R      | 13L-17L:18L-18R     | 18L-18R:17R-13R     | 18L-18R:12R-8R      | 18L-18R:7R-3R        |
|------------------|----------------------|---------------------|---------------------|---------------------|---------------------|----------------------|
| Description      | Outside Track:Middle | Middle Track:Middle | Inside Track:Middle | Middle:Inside Track | Middle:Middle Track | Middle:Outside Track |
| Track Zone Ratio | 11.11                | 1.96                | 1                   | 1                   | 1.96                | 11.11                |

